



The Blueprint of Accountability

Investing in Outcomes at Skyline Sober Living Network

A 501(c)(3) Nonprofit Public Benefit Organization

“Recovery should be built on structure, accountability, and community—not profit.”

The sober living industry faces a systemic challenge: homes operating primarily for profit rather than recovery outcomes. When recovery housing is treated as a business transaction, operators prioritize occupancy and revenue over the well-being of the people they claim to serve. This undermines trust, weakens standards, and harms individuals seeking a real chance at rebuilding their lives.

2015: The Foundation

Skyline Sober Living established with the goal of providing safe, structured housing for men committed to recovery.

2026: The Strategic Pivot

Skyline transitions to a 501(c)(3) nonprofit organization (EIN: 41-4056142) to align financial resources directly with mission-driven impact.

By removing profit as the primary motive, we ensure that every decision, policy, and dollar serves a singular focus: people, recovery, and long-term outcomes.

The Paradigm Shift

Profit-Driven Model

Primary Goal

Maximize occupancy and revenue.

Resident View

Treated as paying customers.

Revenue Allocation

Distributed to private owners and shareholders.

Oversight

Private, opaque decision-making.

Skyline 501(c)(3) Model

Maximize long-term recovery and housing stability.

Treated as accountable community members.

100% reinvested into scholarships, community support, and facility standards.

Governed by an independent Board of Directors ensuring fiduciary accountability.

Our Foundation: The 8 Core Values

	Integrity Honest, transparent operations and responsible stewardship of resources.		Compassion Empathy, patience, and dignity in a judgment-free environment.
	Accountability Personal responsibility and professional standards at all levels.		Community Strong support systems and peer encouragement.
	Stability Safe, structured, and dependable living environments.		Service Prioritizing mission over profit and expanding accessible care.
	Respect Fair treatment for all, regardless of background or circumstance.		Growth Continuous personal development, resilience, and education.

Safe Housing

Providing stable, supportive sober living environments across Orange County.

Financial Access

Supporting individuals experiencing financial hardship through scholarship assistance.

Public Benefit Purpose

Operating exclusively for charitable purposes consistent with Section 501(c)(3).

Skill Building

Promoting accountability and independent living skills.

System Integration

Collaborating with community organizations and public resources to strengthen support networks.

The Framework of Governance

Ecosystem of Oversight

Board of Directors

Strategic oversight, financial accountability, policy approval, and fiduciary responsibility (Duty of Care, Loyalty, and Obedience).



Executive Director

Day-to-day leadership, compliance execution, financial coordination, and mandatory transparent reporting directly to the Board.



Operational & Recovery Personnel

Enforcing resident accountability, managing internal controls, executing program standards, and maintaining professional boundaries.

Rigorous Financial Stewardship

Financial Integrity & Charitable Stewardship

Internal Controls

Strict separation of financial duties, mandated receipt documentation, and restricted access to financial systems.

Board Oversight

Mandatory board review of significant expenditures, budgets, and executive compensation arrangements.

Authorized Spending

Competitive pricing requirements, vendor approval policies, and zero tolerance for unauthorized commitments or off-the-books payments.

Ethical Leadership & Accountability



Resident Relations: The Standard of Care

Structural Boundaries

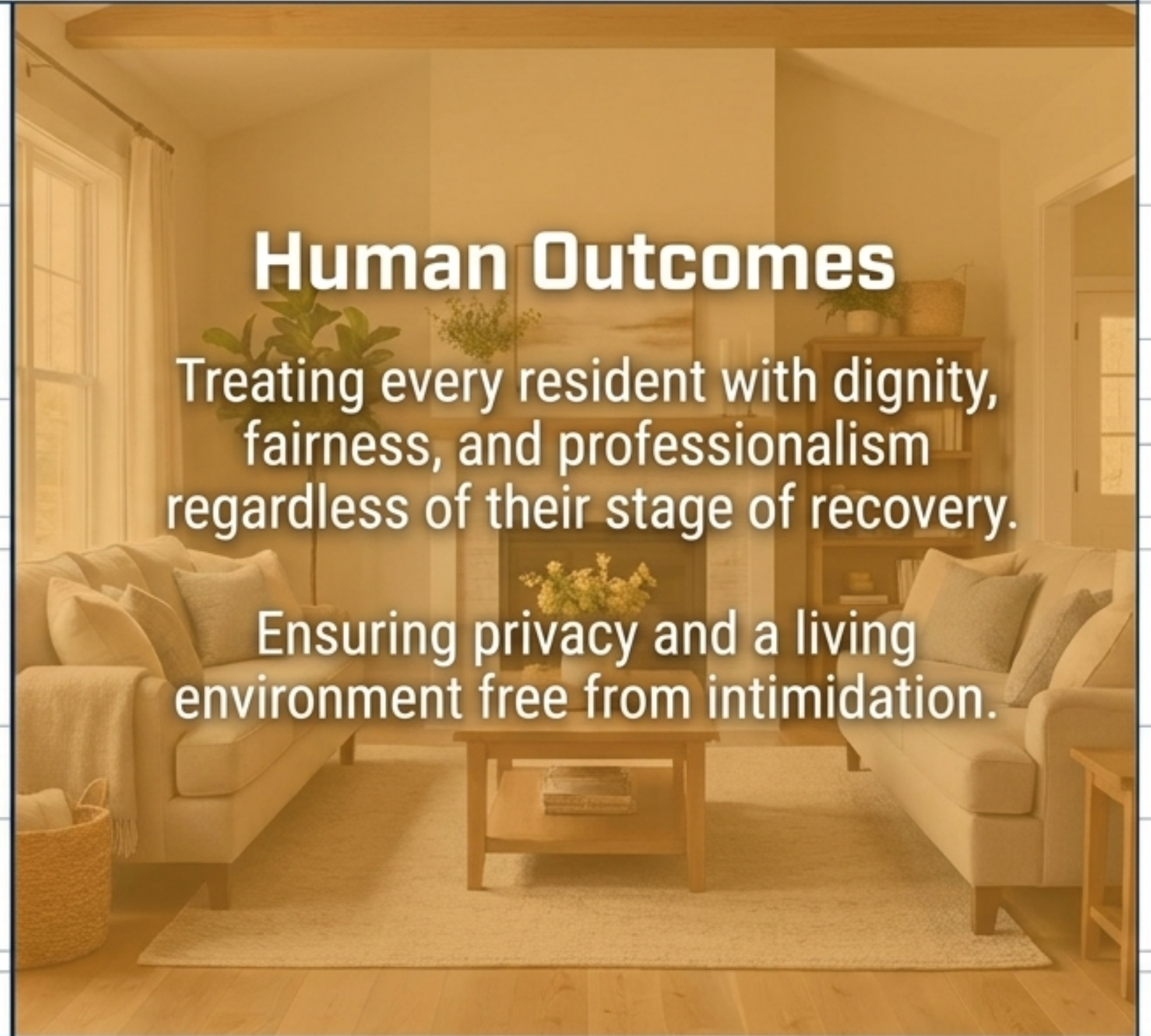
Strict prohibitions against exploitative relationships, financial manipulation, or favoritism.

Implementation of formal, protected resident grievance procedures.

Human Outcomes

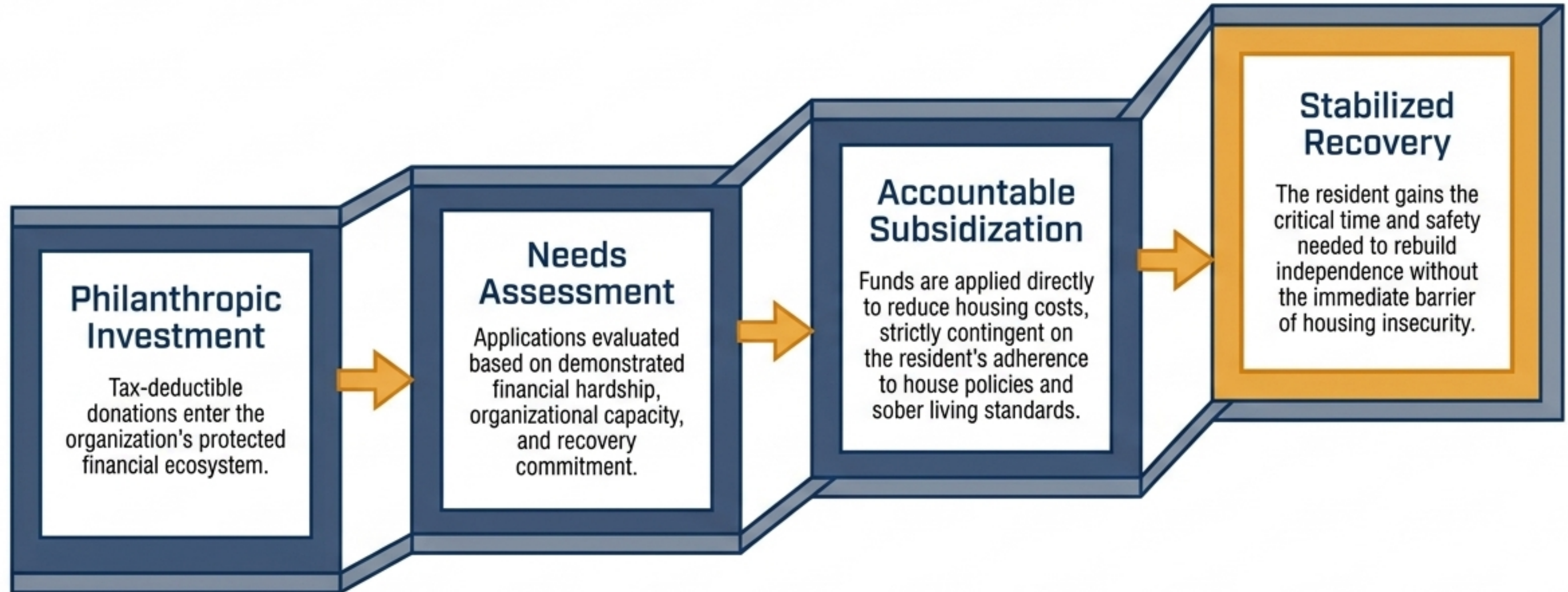
Treating every resident with dignity, fairness, and professionalism regardless of their stage of recovery.

Ensuring privacy and a living environment free from intimidation.

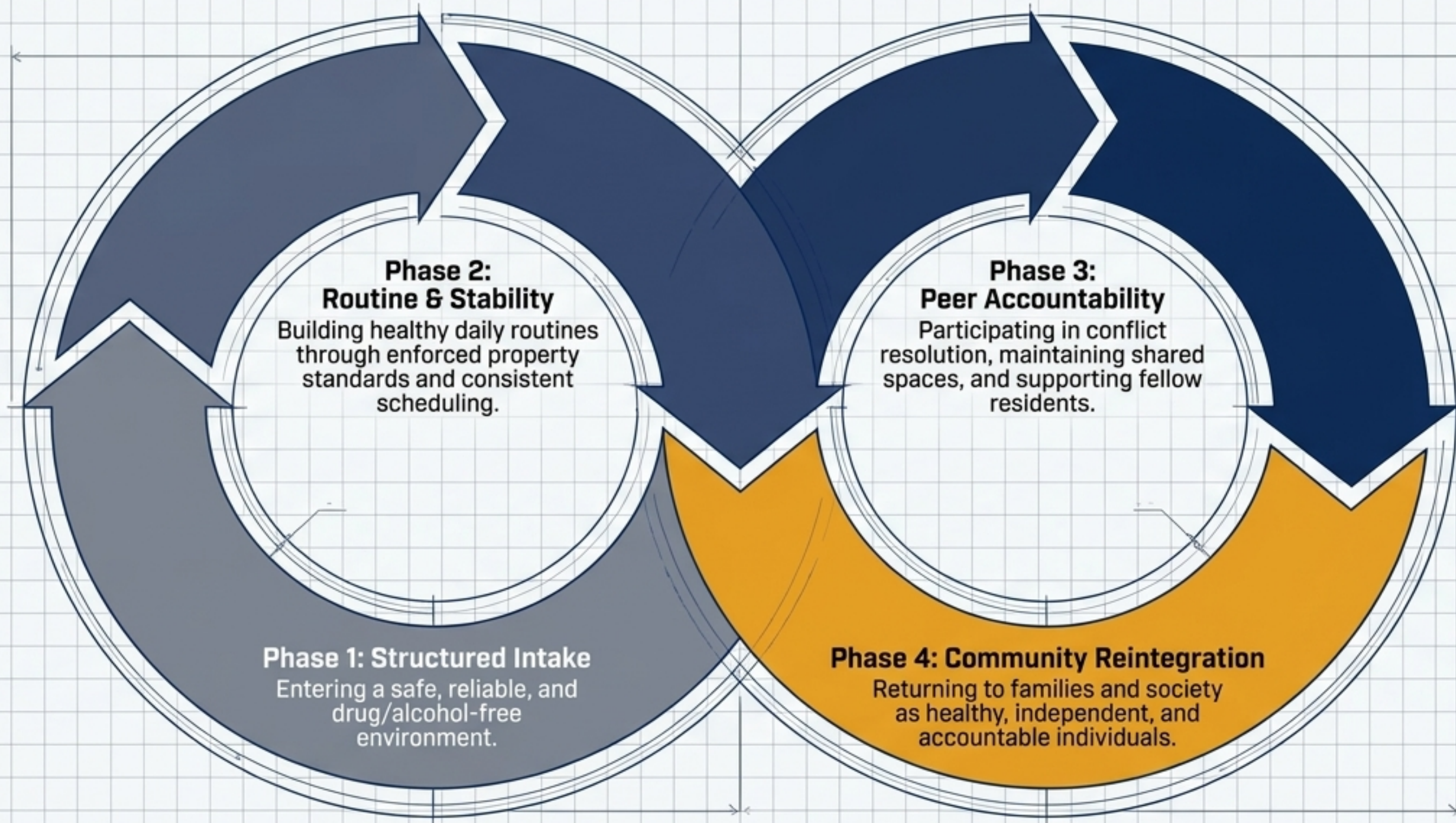


The Scholarship Program

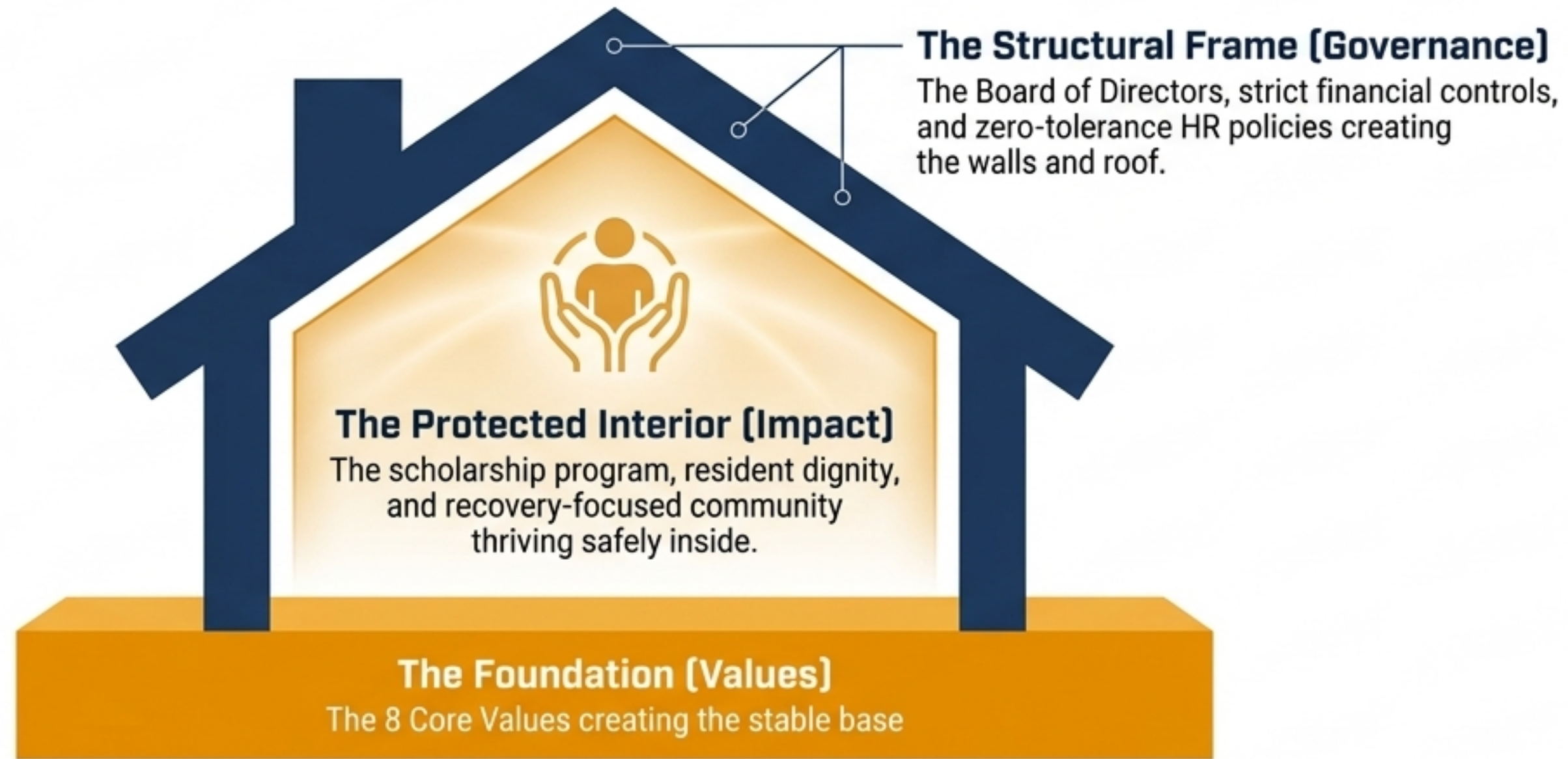
The Scholarship Pipeline



Community Reintegration



Synthesis: The Architecture of Trust



Key Takeaway: High-level governance and strict internal controls are not just administrative hurdles; they are the exact structures required to protect and sustain human recovery.

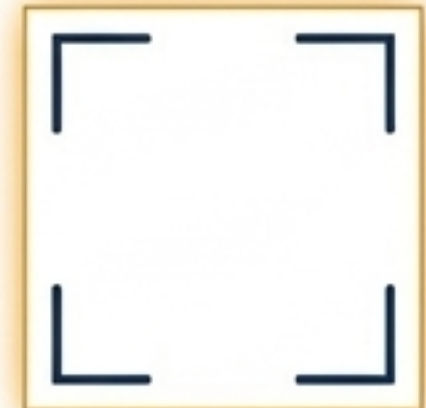


Build the Blueprint with Us.

Skyline Sober Living exists to restore what sober living was always meant to be. **By partnering with us, you are investing in a transparent, rigorously managed model that ensures every dollar directly supports an individual's journey back to health, family, and independence.**

All donations are tax-deductible
(501(c)(3) EIN: 41-4056142).

Contact our Executive Director and Board for partnership inquiries.



Scan to Donate
or Partner