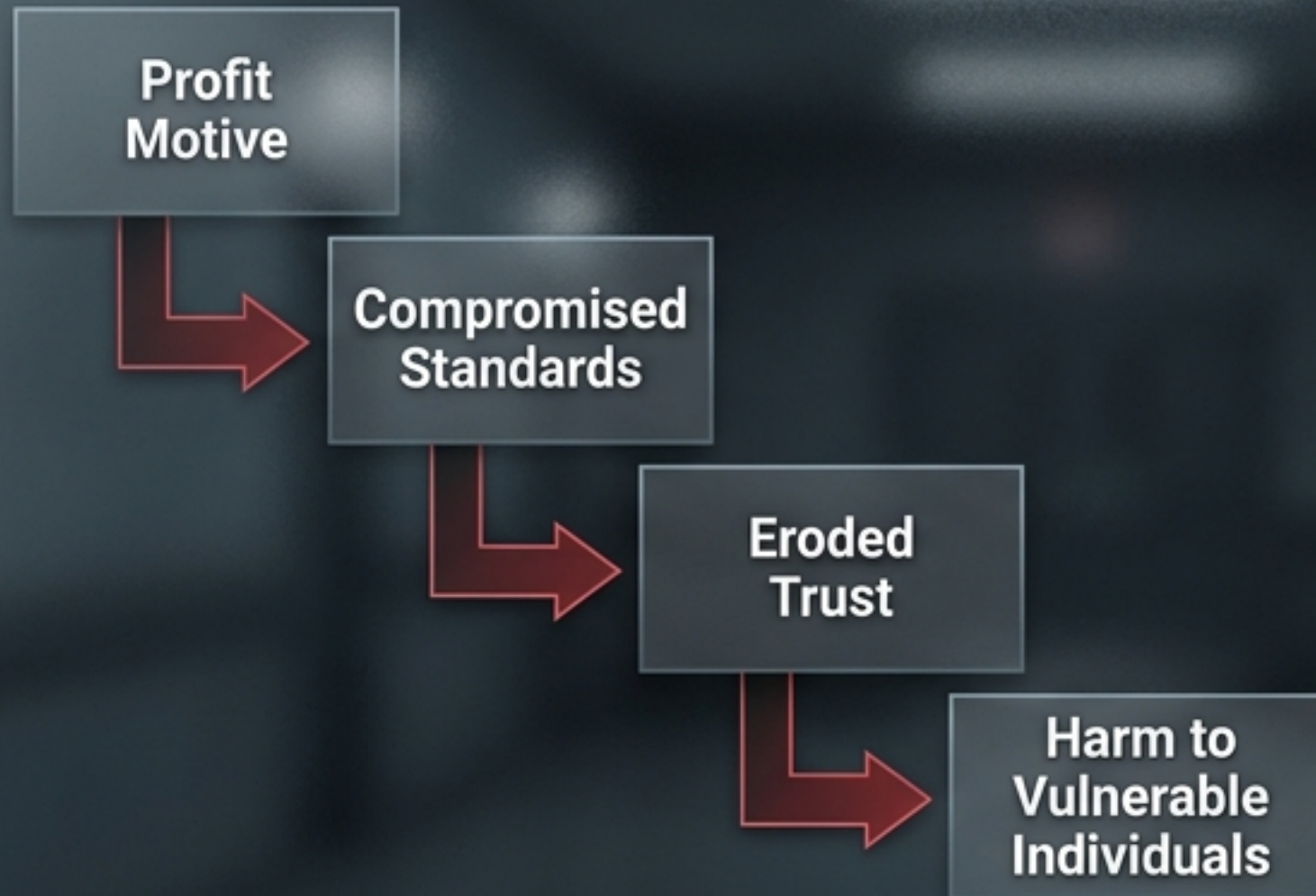


# Restoring the Promise of Recovery

Skyline Sober Living Network

Orange County, California

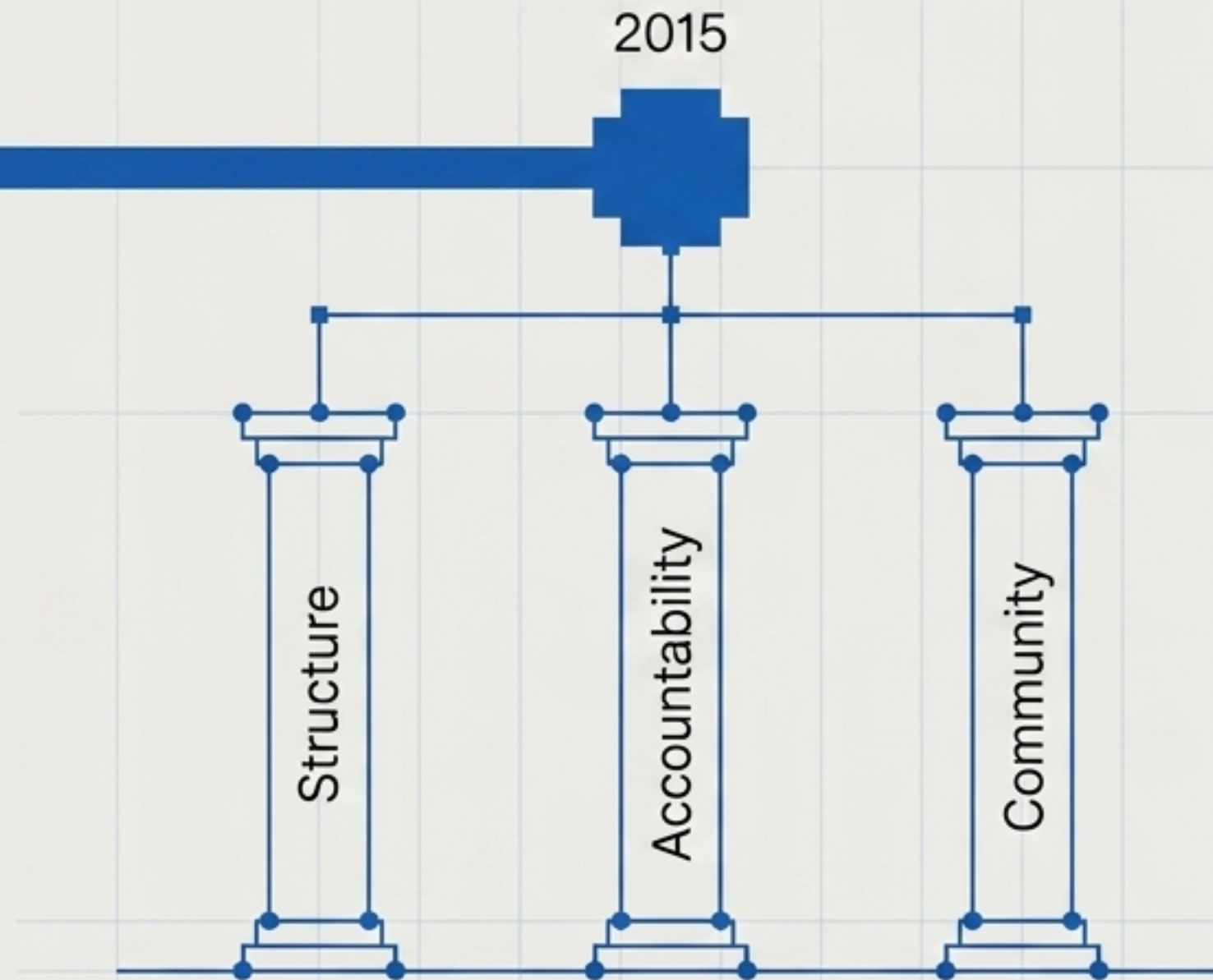
# The Cost of Treating Recovery as a Transaction



The reputation of sober living has been severely damaged by operators who prioritize occupancy and revenue over the well-being of the people they claim to serve.

*"That approach undermines trust, weakens standards, and ultimately harms the very individuals seeking a real chance at rebuilding their lives."*

# A Foundation Built on Accountability



A simple belief:  
recovery should be  
built on structure,  
accountability, and  
community—not profit.

# Contrasting Models of Care

The Occupancy-Driven Model

The Outcomes-Driven Model (Skyline)

Primary Goal

Maximize revenue and maintain high occupancy.

**Long-term recovery outcomes and personal growth.**

Resident Status

Treated as a customer in a business transaction.

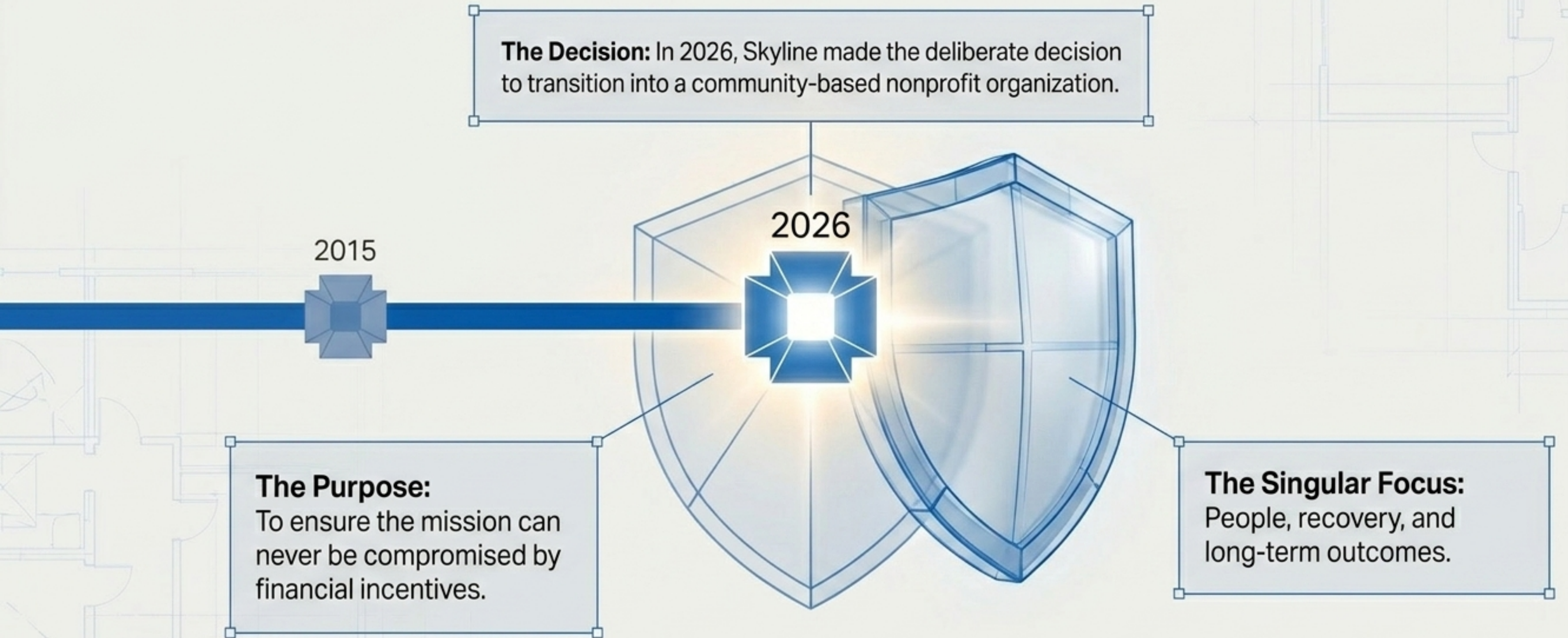
**Treated as a person on a recovery journey.**

Financial Loop

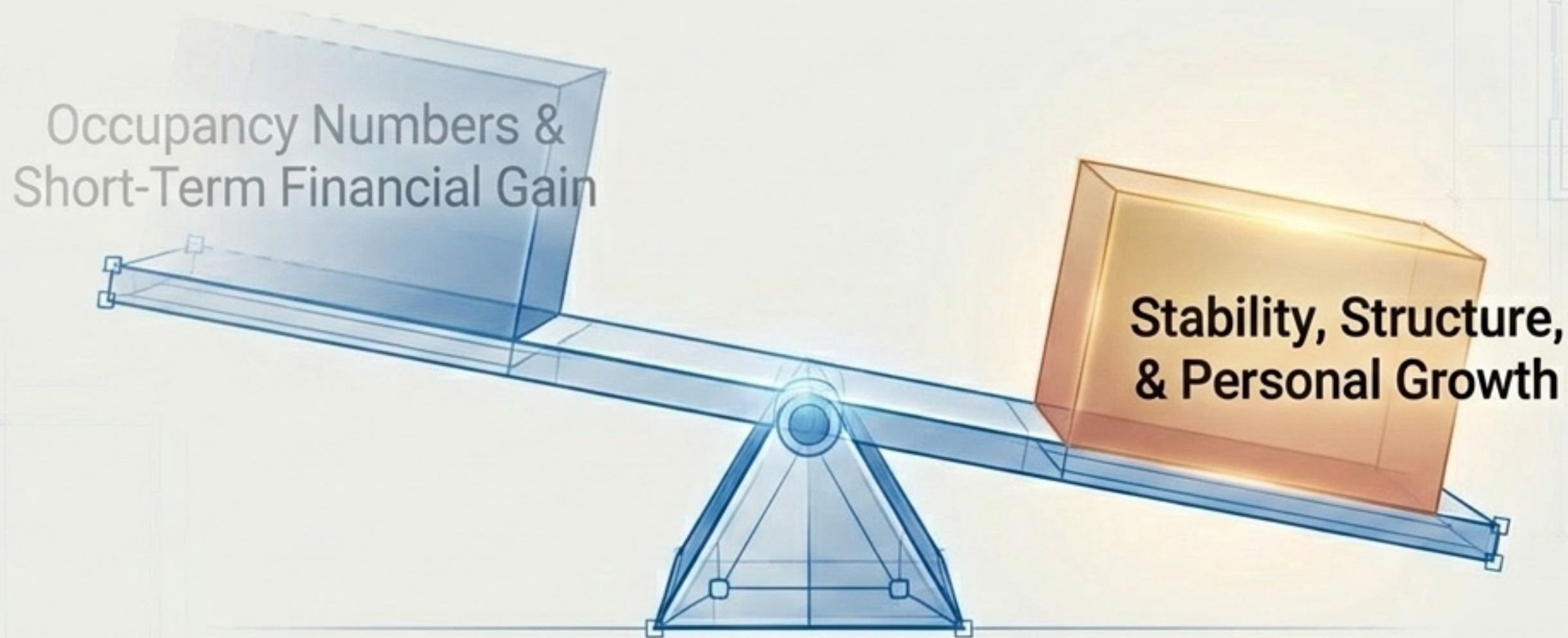
Capital is extracted by private owners and shareholders.

**Every dollar is reinvested back into the community.**

# Structurally Protecting the Mission



# Removing the Profit Motive Changes Everything

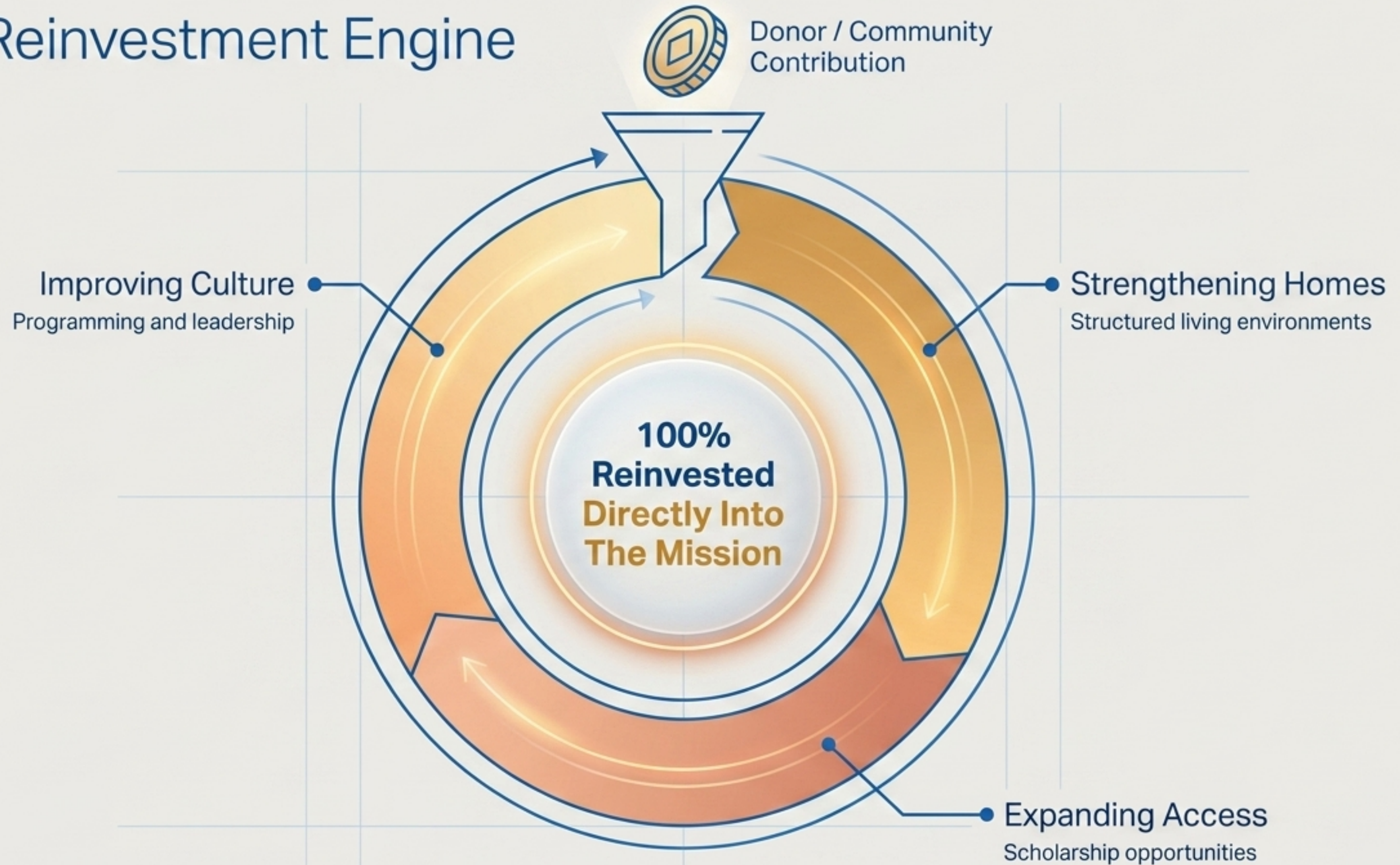


**Eliminates** shareholders and private owners drawing profit.

Creates transparent oversight and accountability.

Ensures operational decisions are guided solely by long-term recovery outcomes.

# The Reinvestment Engine



# Designing Structured Living Environments



**Standard of Care:**  
A foundational environment  
built on strict accountability  
and safety.

**Restoring Dignity:**  
Spaces designed to provide  
respect and community as  
individuals rebuild their lives.

# Expanding Access Through Scholarships



The nonprofit model fundamentally changes who can be helped, opening doors that the profit-driven model keeps firmly shut.

# Cultivating Leadership and Belonging

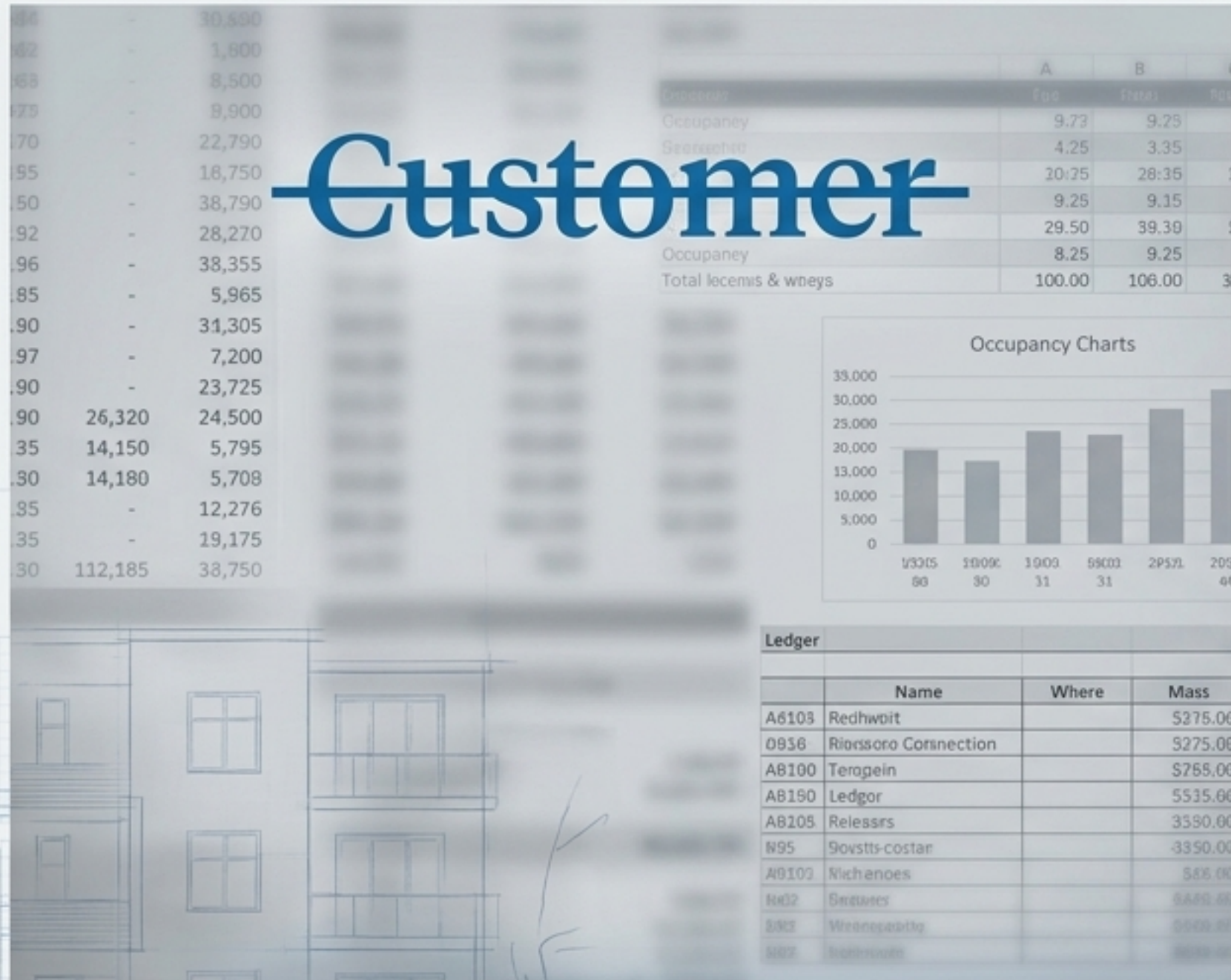


A culture rooted in absolute integrity.

Fostering a deep sense of belonging and accountability.

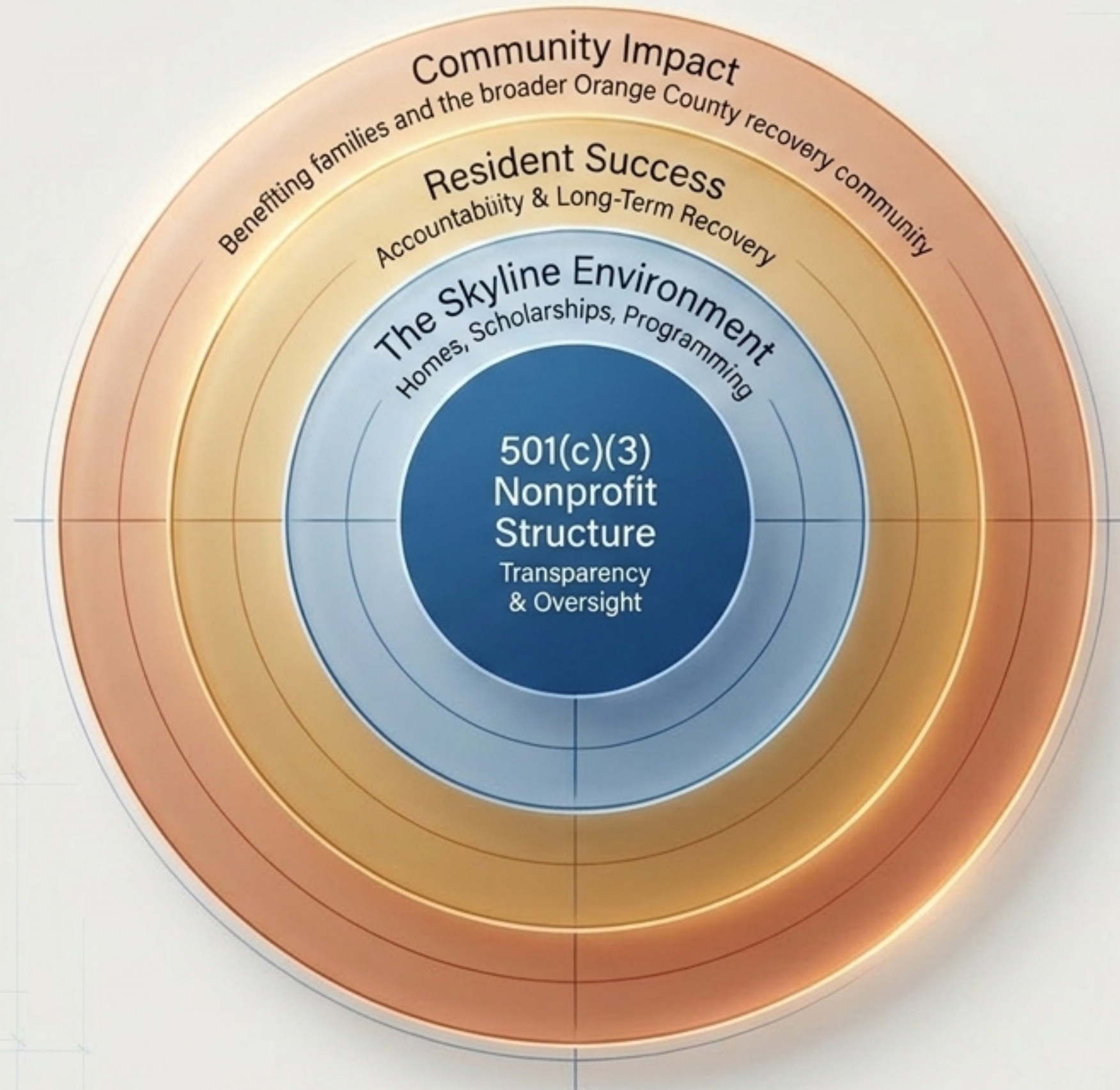
Supporting additional recovery programming beyond basic housing.

# People, Not Customers



Most importantly, the nonprofit model allows Skyline to build an environment where residents are treated as people in a recovery journey—not customers.

# Organizational Structure Dictates Human Outcomes



# Radical Transparency and Oversight

ENTITY STATUS

**501(c)(3) Nonprofit Organization**

FEDERAL EIN

**41-4056142**

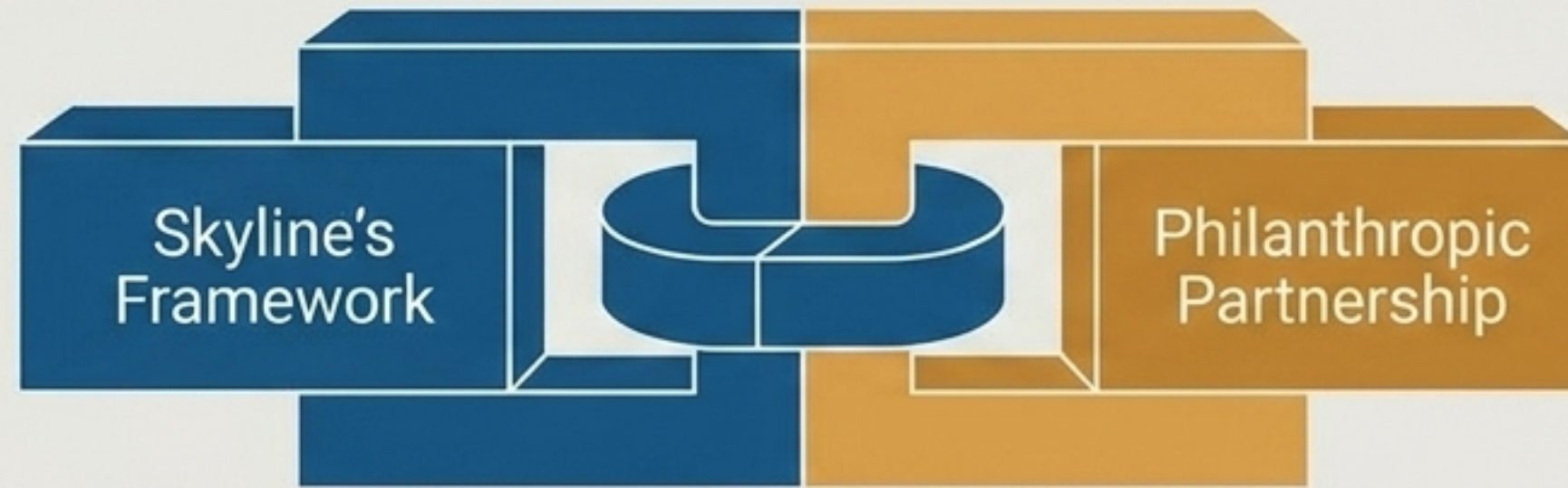
LOCATION

**Orange County, California**

DONOR INFORMATION

**All donations are tax-deductible  
to the extent permitted by law.**

# Building a Stronger Recovery Community Together



An invitation to discerning community partners to invest in a structurally sound, highly accountable model of human recovery.

**Fund a  
Scholarship**

**Support  
Facility  
Expansion**

**Enhance  
Recovery  
Programming**



# Rebuilding Lives with Dignity

Skyline exists to restore what sober living was always meant to be: a place where individuals can rebuild their lives with dignity, support, and accountability.